

TH on exist. F/L,
proposed tie-in point

No TH on BE svc. - crew unable
to penetrate concrete road base;
Elec. Depth = 3.0'

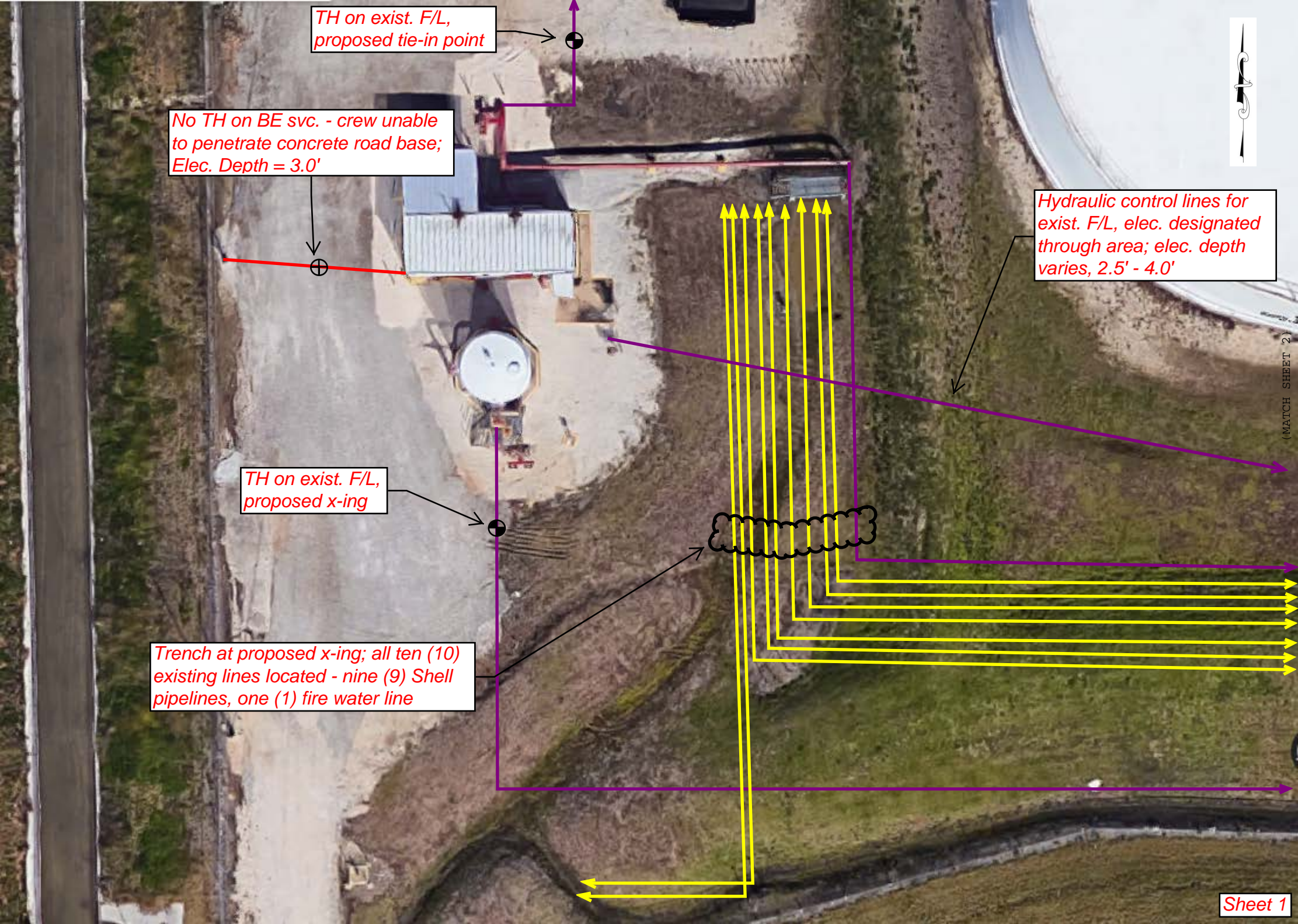
TH on exist. F/L,
proposed x-ing

Trench at proposed x-ing; all ten (10)
existing lines located - nine (9) Shell
pipelines, one (1) fire water line

Hydraulic control lines for
exist. F/L, elec. designated
through area; elec. depth
varies, 2.5' - 4.0'



(MATCH SHEET 2)





**NO TEST HOLES
PERFORMED WITHIN BERM**

*Area scanned electronically with RD8000,
Metrotech 850, and RD1000 GPR; no additional
utilities found*

Hydraulic control lines

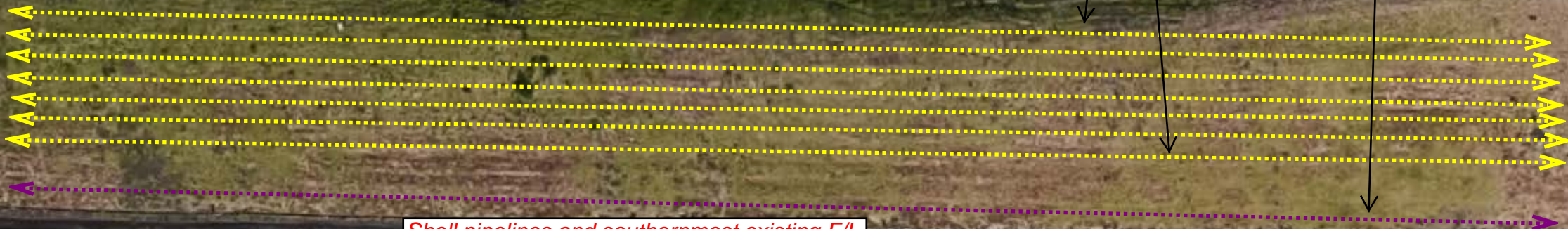
Shell Pipelines

Exist. F/L

Exist. F/L

(MATCH SHEET 1)

(MATCH SHEET 3)



*Shell pipelines and southernmost existing F/L
not designated through area - existing
conditions prevented accurate designation
(depth, soil, lack of access points); horizontal
position based on known location to the west
and east of berm*



NO TEST HOLES PERFORMED WITHIN BERM

Traffic HH; unable to electronically designate line in/ out of HH

Shell pipelines

Area scanned electronically with RD8000, Metrotech 850, and RD1000 GPR; no additional utilities found

Exist. F/L

(MATCH SHEET 2)



Exist. F/L

Shell pipelines and southernmost existing F/L not designated to the west - existing conditions prevented accurate designation (depth, soil, lack of access points); horizontal position based on known designated position east of the berm

Bearle St

Bearle St

(MATCH SHEET 4)



Bearle St

TH on 3rd-party pipeline

TH on AT&T FOC

TH on 2" Steel Unk.

TH on AT&T BT

TH on 3rd-party pipeline

TH on water line

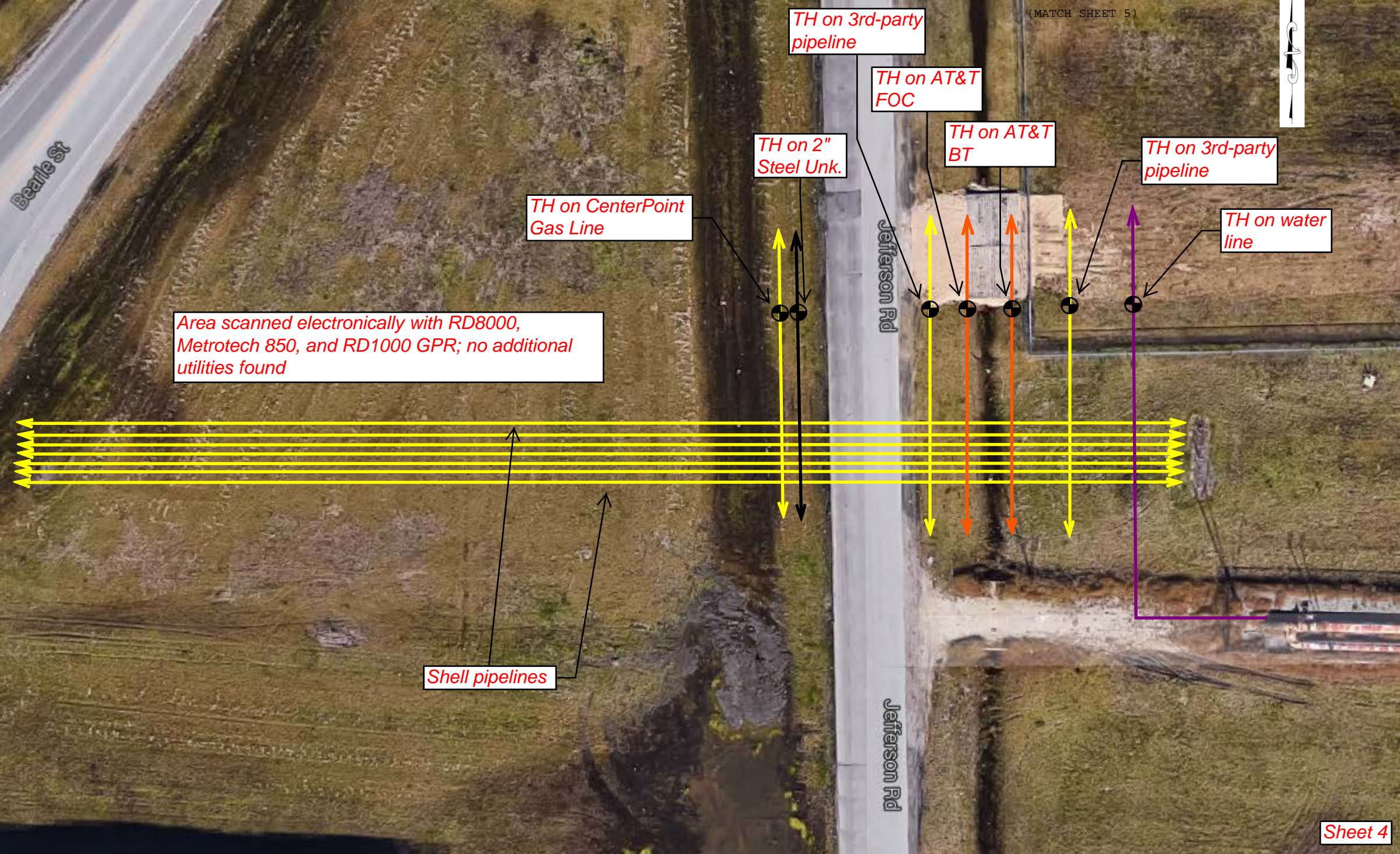
TH on CenterPoint Gas Line

Area scanned electronically with RD8000, Metrotech 850, and RD1000 GPR; no additional utilities found

Jefferson Rd

Jefferson Rd

Shell pipelines

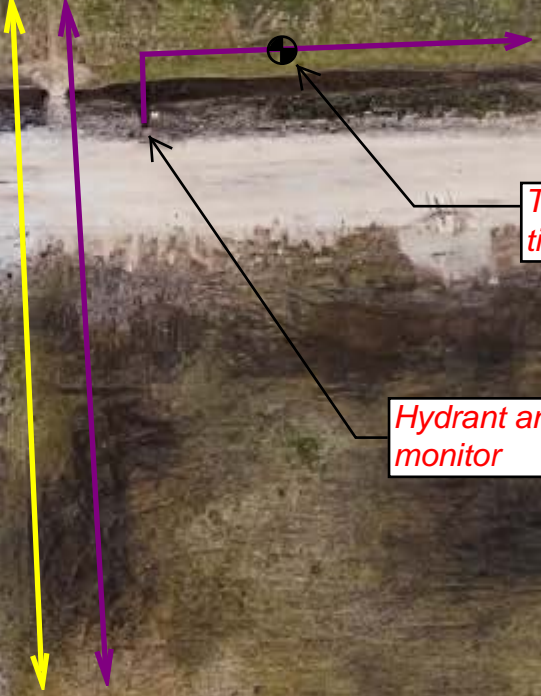




Area scanned electronically with RD8000, Metrotech 850, and RD1000 GPR; no additional utilities found

TH on exist. F/L at tie-in point

Hydrant and monitor



Bearle St
Jefferson Rd
Jefferson Rd
Bearle St